

MILANO

CENTRO SPORTIVO  
XXV APRILE

PROGETTO

REALIZZAZIONE NUOVA  
GUARDIANIA

PROGETTO ESECUTIVO



**SHESA**

ARCHITETTURA - DESIGN - MULTIMEDIA

Arch. Hernando Suarez, Arch. Stefano Suarez  
Arch. Eloy Suarez, Arch. Andrea Sili Scavalli

IMPIANTI

Ing. Mario Semproni

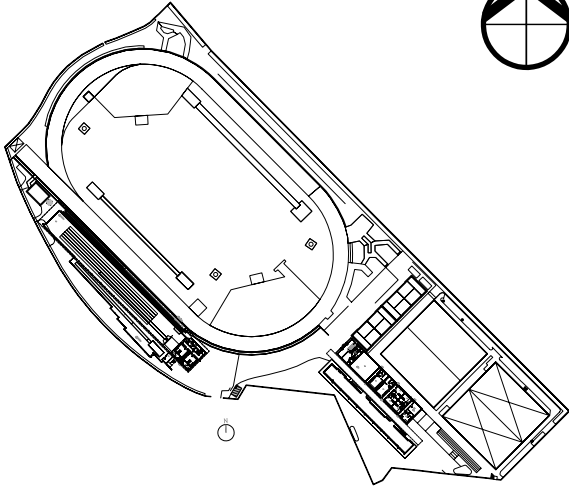
TITOLO

CALCOLI IMPIANTISTICI

DATA	SCALA	REVISIONE
01-08-2011	--:--	0

TAVOLA

MIA-0-R002



TITOLO

CALCOLI  
ILLUMINOTECNICI

---

# Pista - Photofinish

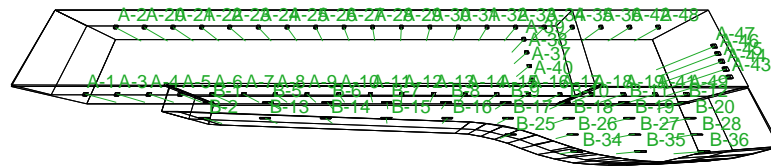
Note Installazione:

Cliente:

Codice Progetto: I 40013836-1

Data: 14/07/2011

Note:



NOME PROGETTISTA:

Indirizzo:

Tel.-Fax:

GEWISS SpA

Via A.Volta 1 - 24069 Cenate Sotto BG

Tel.+39/035/946111 Fax +39/035/945222

Avvertenze:

## 1.1 Informazioni sul Locale

Superficie	Dimensioni [m]	Angolo[°]	Colore	Coefficiente Riflessione	Illum.Medio [lux]	Luminanza Media [cd/m²]
Soffitto	82.99x18.53	Piano	RGB=255,255,255	60%	26	5.03
Parete 27	7.20x82.99	-180°	RGB=255,249,128	60%	250	47.84
Parete 26	7.20x10.33	90°	RGB=255,249,128	60%	594	113.44
Parete 25	7.20x17.19	0°	RGB=255,249,128	60%	571	109.13
Parete 24	7.20x0.15	90°	RGB=255,249,128	60%	2.09	0.40
Parete 23	7.20x17.14	180°	RGB=255,249,128	60%	194	37.08
Parete 22	7.20x6.47	90°	RGB=255,249,128	60%	128	24.48
Parete 21	7.20x0.80	13°	RGB=255,249,128	60%	109	20.89
Parete 20	7.20x2.34	14°	RGB=255,249,128	60%	219	41.73
Parete 19	7.20x2.34	10°	RGB=255,249,128	60%	261	49.89
Parete 18	7.20x2.34	7°	RGB=255,249,128	60%	129	24.69
Parete 17	7.20x2.34	3°	RGB=255,249,128	60%	169	32.23
Parete 16	7.20x2.34	-0°	RGB=255,249,128	60%	242	46.20
Parete 15	7.20x2.24	-2°	RGB=255,249,128	60%	133	25.32
Parete 14	7.20x2.24	-7°	RGB=255,249,128	60%	129	24.56
Parete 13	7.20x2.24	-11°	RGB=255,249,128	60%	288	54.93
Parete 12	7.20x2.24	-16°	RGB=255,249,128	60%	187	35.67
Parete 11	7.20x2.24	-20°	RGB=255,249,128	60%	106	20.31
Parete 10	7.20x1.75	-21°	RGB=255,249,128	60%	127	24.32
Parete 9	7.20x1.75	-17°	RGB=255,249,128	60%	454	86.67
Parete 8	7.20x1.75	-13°	RGB=255,249,128	60%	171	32.58
Parete 7	7.20x1.75	-9°	RGB=255,249,128	60%	98	18.63
Parete 6	7.20x1.75	-5°	RGB=255,249,128	60%	103	19.64
Parete 5	7.20x31.65	-2°	RGB=255,249,128	60%	162	30.98
Parete 4	7.20x1.77	-2°	RGB=255,249,128	60%	396	75.72
Parete 3	7.20x2.89	-89°	RGB=255,249,128	60%	189	36.18
Parete 2	7.20x17.80	0°	RGB=255,249,128	60%	160	30.56
Parete 1	7.20x10.33	-90°	RGB=255,249,128	60%	74	14.12
Pavimento	18.53x82.99	Piano	RGB=183,60,0	30%	574	54.77

Dimensioni del Parallelepipedo Contenente il Locale [m]:  
Reticolo Punti di Calcolo del Parallelepipedo [m]:

82.99x18.53x7.20  
direzione X 3.46 - Y 1.03 - Z 0.60

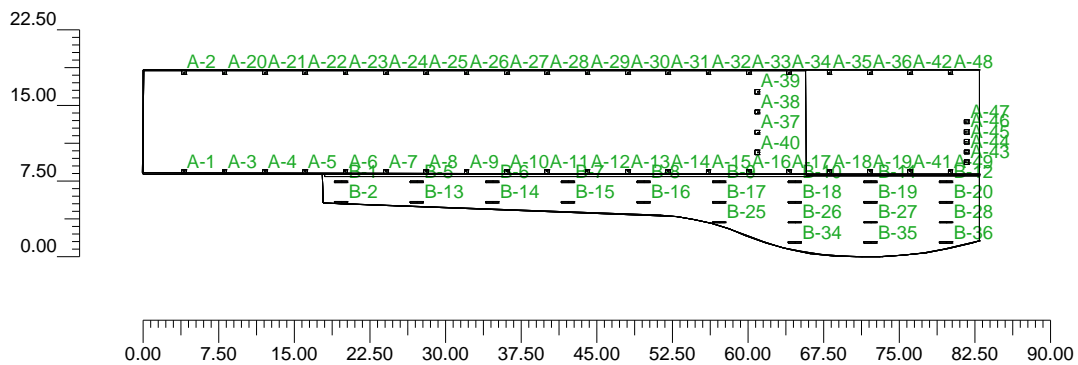
## 1.2 Calcolo Energetico (Piano di Lavoro)

Area	1189.37 m2
Illuminamento Medio	573.93 lx
Potenza Specifica	14.03 W/m2
Potenza Specifica Illuminotecnica	2.45 W/(m2 * 100lx)
Efficienza Energetica	40.90 (m2*lx)/W
Potenza Totale Utilizzata	16690.00 W



## 2.1 Vista 2D in Pianta

Scala 1/750

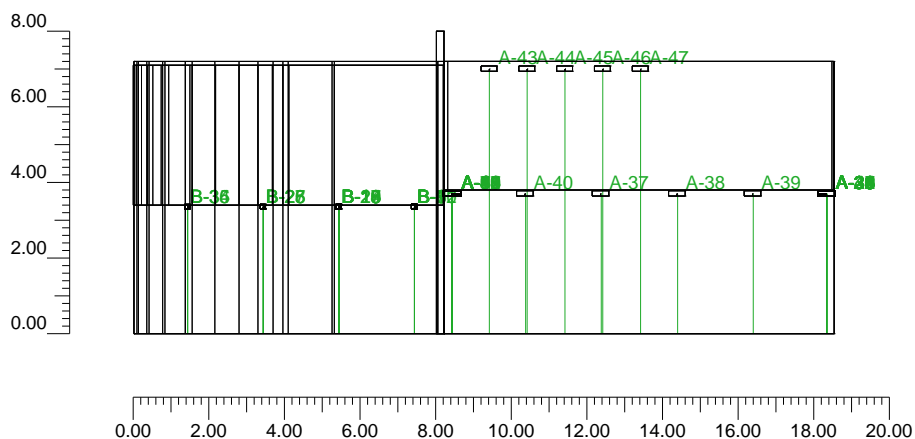


x°



## 2.2 Vista Laterale

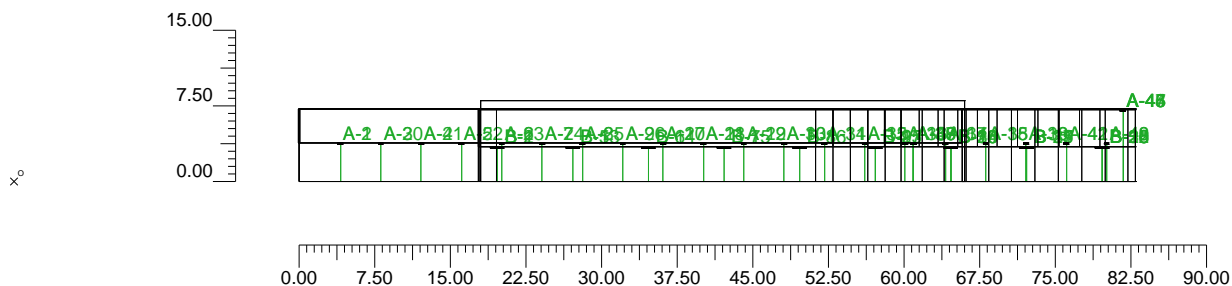
Scala 1/200





### 2.3 Vista Frontale

Scala 1/750



### 3.1 Informazioni Apparecchi/Rilievi

Rifer.	Linea	Nome Apparecchio (Nome Rilievo)	Codice Apparecchio (Codice Rilievo)	Apparecchi N.	Rif.Lamp.	Lampade N.
A	MERCURIO	MERCURIO 2 A 250W MT (MERCURIO2 A D 250W MT 1KV)	GW85422M (85422M.L72)	44	LMP-A	1
B	MERCURIO	MERCURIO 2 A 400W MT (MERCURIO2 A D 400W MT 1KV)	GW85424M (85424M.L69)	5	LMP-B	1
C	ZNT	ZNT 2x80W FSD IP65 (ZNT 2x80W FSD)	GW80194 (80194.Z18)	25	LMP-C	2

### 3.2 Informazioni Lampade

Rif.Lamp.	Tipo	Codice	Flusso [lm]	Potenza [W]	Colore [K]	N.
LMP-A	MT	HPI-T plus 250W M W	20500	245	4500	44
LMP-B	MT	HPI-T plus 400W M W	35000	382	4500	5
LMP-C	FSD 80	DL8021	6000	80	4000	50

### 3.3 Tabella Riepilogativa Apparecchi

Rifer.	App.	On	Posizione Apparecchi X[m] Y[m] Z[m]	Rotazione Apparecchi X[°] Y[°] Z[°]	Codice Apparecchio	Coeff. Mant.	Codice Lampada	Flusso [lm]
A	1	X	32.37;31.01;3.70	0.0;0.0;90.0	GW85422M	0.80	HPI-T plus 250W M W	1*20500
	2	X	32.37;40.91;3.70	0.0;0.0;-90.0		0.80		
	3	X	36.37;31.01;3.70	0.0;0.0;90.0		0.80		
	4	X	40.37;31.01;3.70	0.0;0.0;90.0		0.80		
	5	X	44.37;31.01;3.70	0.0;0.0;90.0		0.80		
	6	X	48.37;31.01;3.70	0.0;0.0;90.0		0.80		
	7	X	52.37;31.01;3.70	0.0;0.0;90.0		0.80		
	8	X	56.37;31.01;3.70	0.0;0.0;90.0		0.80		
	9	X	60.37;31.01;3.70	0.0;0.0;90.0		0.80		
	10	X	64.37;31.01;3.70	0.0;0.0;90.0		0.80		
	11	X	68.37;31.01;3.70	0.0;0.0;90.0		0.80		
	12	X	72.37;31.01;3.70	0.0;0.0;90.0		0.80		
	13	X	76.37;31.01;3.70	0.0;0.0;90.0		0.80		
	14	X	80.37;31.01;3.70	0.0;0.0;90.0		0.80		
	15	X	84.37;31.01;3.70	0.0;0.0;90.0		0.80		
	16	X	88.37;31.01;3.70	0.0;0.0;90.0		0.80		
	17	X	92.37;31.01;3.70	0.0;0.0;90.0		0.80		
	18	X	96.37;31.01;3.70	0.0;0.0;90.0		0.80		
	19	X	100.37;31.01;3.70	0.0;0.0;90.0		0.80		
	20	X	36.37;40.91;3.70	0.0;0.0;-90.0		0.80		
	21	X	40.37;40.91;3.70	0.0;0.0;-90.0		0.80		
	22	X	44.37;40.91;3.70	0.0;0.0;-90.0		0.80		
	23	X	48.37;40.91;3.70	0.0;0.0;-90.0		0.80		
	24	X	52.37;40.91;3.70	0.0;0.0;-90.0		0.80		
	25	X	56.37;40.91;3.70	0.0;0.0;-90.0		0.80		
	26	X	60.37;40.91;3.70	0.0;0.0;-90.0		0.80		
	27	X	64.37;40.91;3.70	0.0;0.0;-90.0		0.80		
	28	X	68.37;40.91;3.70	0.0;0.0;-90.0		0.80		
	29	X	72.37;40.91;3.70	0.0;0.0;-90.0		0.80		
	30	X	76.37;40.91;3.70	0.0;0.0;-90.0		0.80		
	31	X	80.37;40.91;3.70	0.0;0.0;-90.0		0.80		
	32	X	84.37;40.91;3.70	0.0;0.0;-90.0		0.80		
	33	X	88.37;40.91;3.70	0.0;0.0;-90.0		0.80		
	34	X	92.37;40.91;3.70	0.0;0.0;-90.0		0.80		
	35	X	96.37;40.91;3.70	0.0;0.0;-90.0		0.80		
	36	X	100.37;40.91;3.70	0.0;0.0;-90.0		0.80		
	37	X	89.21;34.95;3.70	0.0;0.0;0.0		0.80		
	38	X	89.21;36.97;3.70	0.0;0.0;0.0		0.80		



Rifer.	App.	On	Posizione Apparecchi X[m] Y[m] Z[m]	Rotazione Apparecchi X[°] Y[°] Z[°]	Codice Apparecchio	Coeff. Mant.	Codice Lampada	Flusso [lm]
A	39	X	89.21;38.97;3.70	0.0;0.0;0.0	GW85422M	0.80	HPI-T plus 250W M W	1*20500
	40	X	89.21;32.95;3.70	0.0;0.0;0.0		0.80		
	41	X	104.37;31.01;3.70	0.0;0.0;90.0		0.80		
	42	X	104.37;40.91;3.70	0.0;0.0;-90.0		0.80		
	43	X	108.37;40.91;3.70	0.0;0.0;-90.0		0.80		
B	44	X	108.37;31.01;3.70	0.0;0.0;90.0	GW85424M	0.80	HPI-T plus 400W M W	1*35000
	1	X	110.00;32.00;7.00	0.0;0.0;180.0		0.80		
	2	X	110.00;33.00;7.00	0.0;0.0;180.0		0.80		
	3	X	110.00;34.00;7.00	0.0;0.0;180.0		0.80		
	4	X	110.00;35.00;7.00	0.0;0.0;180.0		0.80		
C	5	X	110.00;36.00;7.00	0.0;0.0;180.0	GW80194	0.80	DL8021	2*6000
	1	X	47.95;30.02;3.35	0.0;0.0;90.0		0.80		
	2	X	47.95;28.02;3.35	0.0;0.0;90.0		0.80		
	3	X	55.45;30.02;3.35	0.0;0.0;90.0		0.80		
	4	X	62.95;30.02;3.35	0.0;0.0;90.0		0.80		
	5	X	70.45;30.02;3.35	0.0;0.0;90.0		0.80		
	6	X	77.95;30.02;3.35	0.0;0.0;90.0		0.80		
	7	X	85.45;30.02;3.35	0.0;0.0;90.0		0.80		
	8	X	92.95;30.02;3.35	0.0;0.0;90.0		0.80		
	9	X	100.45;30.02;3.35	0.0;0.0;90.0		0.80		
	10	X	107.95;30.02;3.35	0.0;0.0;90.0		0.80		
	11	X	55.45;28.02;3.35	0.0;0.0;90.0		0.80		
	12	X	62.95;28.02;3.35	0.0;0.0;90.0		0.80		
	13	X	70.45;28.02;3.35	0.0;0.0;90.0		0.80		
	14	X	77.95;28.02;3.35	0.0;0.0;90.0		0.80		
	15	X	85.45;28.02;3.35	0.0;0.0;90.0		0.80		
	16	X	92.95;28.02;3.35	0.0;0.0;90.0		0.80		
	17	X	100.45;28.02;3.35	0.0;0.0;90.0		0.80		
	18	X	107.95;28.02;3.35	0.0;0.0;90.0		0.80		
	19	X	85.45;26.02;3.35	0.0;0.0;90.0		0.80		
	20	X	92.95;26.02;3.35	0.0;0.0;90.0		0.80		
	21	X	100.45;26.02;3.35	0.0;0.0;90.0		0.80		
	22	X	107.95;26.02;3.35	0.0;0.0;90.0		0.80		
	23	X	92.95;24.02;3.35	0.0;0.0;90.0		0.80		
	24	X	100.45;24.02;3.35	0.0;0.0;90.0		0.80		
25	X	107.95;24.02;3.35	0.0;0.0;90.0	0.80				

### 3.4 Tabella Riepilogativa Puntamenti

Struttura	File	Colonna	Rifer. 2D	On	Posizione Apparecchi X[m] Y[m] Z[m]	Rotazione Apparecchi X[°] Y[°] Z[°]	Puntamenti X[m] Y[m] Z[m]	R.Asse [°]	Coeff. Mant.	Rifer.
			A-1	X	32.37;31.01;3.70	0.0;0.0;90.0	32.37;31.01;0.00	90	0.80	A
			A-2	X	32.37;40.91;3.70	0.0;0.0;-90.0	32.37;40.91;0.00	-90	0.80	A
			A-3	X	36.37;31.01;3.70	0.0;0.0;90.0	36.37;31.01;0.00	90	0.80	A
			A-4	X	40.37;31.01;3.70	0.0;0.0;90.0	40.37;31.01;0.00	90	0.80	A
			A-5	X	44.37;31.01;3.70	0.0;0.0;90.0	44.37;31.01;0.00	90	0.80	A
			A-6	X	48.37;31.01;3.70	0.0;0.0;90.0	48.37;31.01;0.00	90	0.80	A
			A-7	X	52.37;31.01;3.70	0.0;0.0;90.0	52.37;31.01;0.00	90	0.80	A
			A-8	X	56.37;31.01;3.70	0.0;0.0;90.0	56.37;31.01;0.00	90	0.80	A
			A-9	X	60.37;31.01;3.70	0.0;0.0;90.0	60.37;31.01;0.00	90	0.80	A
			A-10	X	64.37;31.01;3.70	0.0;0.0;90.0	64.37;31.01;0.00	90	0.80	A
			A-11	X	68.37;31.01;3.70	0.0;0.0;90.0	68.37;31.01;0.00	90	0.80	A
			A-12	X	72.37;31.01;3.70	0.0;0.0;90.0	72.37;31.01;0.00	90	0.80	A
			A-13	X	76.37;31.01;3.70	0.0;0.0;90.0	76.37;31.01;0.00	90	0.80	A
			A-14	X	80.37;31.01;3.70	0.0;0.0;90.0	80.37;31.01;0.00	90	0.80	A
			A-15	X	84.37;31.01;3.70	0.0;0.0;90.0	84.37;31.01;0.00	90	0.80	A
			A-16	X	88.37;31.01;3.70	0.0;0.0;90.0	88.37;31.01;0.00	90	0.80	A
			A-17	X	92.37;31.01;3.70	0.0;0.0;90.0	92.37;31.01;0.00	90	0.80	A
			A-18	X	96.37;31.01;3.70	0.0;0.0;90.0	96.37;31.01;0.00	90	0.80	A
			A-19	X	100.37;31.01;3.70	0.0;0.0;90.0	100.37;31.01;0.00	90	0.80	A
			A-20	X	36.37;40.91;3.70	0.0;0.0;-90.0	36.37;40.91;0.00	-90	0.80	A
			A-21	X	40.37;40.91;3.70	0.0;0.0;-90.0	40.37;40.91;0.00	-90	0.80	A
			A-22	X	44.37;40.91;3.70	0.0;0.0;-90.0	44.37;40.91;0.00	-90	0.80	A
			A-23	X	48.37;40.91;3.70	0.0;0.0;-90.0	48.37;40.91;0.00	-90	0.80	A
			A-24	X	52.37;40.91;3.70	0.0;0.0;-90.0	52.37;40.91;0.00	-90	0.80	A

Struttura	Fila	Colonna	Rifer. 2D	On	Posizione Apparecchi			Rotazione Apparecchi			Puntamenti			R.Asse [°]	Coeff. Mant.	Rifer.
					X[m]	Y[m]	Z[m]	X[°]	Y[°]	Z[°]	X[m]	Y[m]	Z[m]			
			A-25	X	56.37	40.91	3.70	0.0	0.0	-90.0	56.37	40.91	0.00	-90	0.80	A
			A-26	X	60.37	40.91	3.70	0.0	0.0	-90.0	60.37	40.91	0.00	-90	0.80	A
			A-27	X	64.37	40.91	3.70	0.0	0.0	-90.0	64.37	40.91	0.00	-90	0.80	A
			A-28	X	68.37	40.91	3.70	0.0	0.0	-90.0	68.37	40.91	0.00	-90	0.80	A
			A-29	X	72.37	40.91	3.70	0.0	0.0	-90.0	72.37	40.91	0.00	-90	0.80	A
			A-30	X	76.37	40.91	3.70	0.0	0.0	-90.0	76.37	40.91	0.00	-90	0.80	A
			A-31	X	80.37	40.91	3.70	0.0	0.0	-90.0	80.37	40.91	0.00	-90	0.80	A
			A-32	X	84.37	40.91	3.70	0.0	0.0	-90.0	84.37	40.91	0.00	-90	0.80	A
			A-33	X	88.37	40.91	3.70	0.0	0.0	-90.0	88.37	40.91	0.00	-90	0.80	A
			A-34	X	92.37	40.91	3.70	0.0	0.0	-90.0	92.37	40.91	0.00	-90	0.80	A
			A-35	X	96.37	40.91	3.70	0.0	0.0	-90.0	96.37	40.91	0.00	-90	0.80	A
			A-36	X	100.37	40.91	3.70	0.0	0.0	-90.0	100.37	40.91	0.00	-90	0.80	A
			A-37	X	89.21	34.95	3.70	0.0	0.0	0.0	89.21	34.95	0.00	0	0.80	A
			A-38	X	89.21	36.97	3.70	0.0	0.0	0.0	89.21	36.97	0.00	0	0.80	A
			A-39	X	89.21	38.97	3.70	0.0	0.0	0.0	89.21	38.97	0.00	0	0.80	A
			A-40	X	89.21	32.95	3.70	0.0	0.0	0.0	89.21	32.95	0.00	0	0.80	A
			A-41	X	104.37	31.01	3.70	0.0	0.0	90.0	104.37	31.01	0.00	90	0.80	A
			A-42	X	104.37	40.91	3.70	0.0	0.0	-90.0	104.37	40.91	0.00	-90	0.80	A
			A-43	X	110.00	32.00	7.00	0.0	0.0	180.0	110.00	32.00	0.00	180	0.80	B
			A-48	X	108.37	40.91	3.70	0.0	0.0	-90.0	108.37	40.91	0.00	-90	0.80	A
			A-49	X	108.37	31.01	3.70	0.0	0.0	90.0	108.37	31.01	0.00	90	0.80	A
			A-44	X	110.00	33.00	7.00	0.0	0.0	180.0	110.00	33.00	0.00	180	0.80	B
			A-45	X	110.00	34.00	7.00	0.0	0.0	180.0	110.00	34.00	0.00	180	0.80	B
			A-46	X	110.00	35.00	7.00	0.0	0.0	180.0	110.00	35.00	0.00	180	0.80	B
			A-47	X	110.00	36.00	7.00	0.0	0.0	180.0	110.00	36.00	0.00	180	0.80	B
			B-1	X	47.95	30.02	3.35	0.0	0.0	90.0	47.95	30.02	0.00	90	0.80	C
			B-2	X	47.95	28.02	3.35	0.0	0.0	90.0	47.95	28.02	0.00	90	0.80	C
			B-5	X	55.45	30.02	3.35	0.0	0.0	90.0	55.45	30.02	0.00	90	0.80	C
			B-6	X	62.95	30.02	3.35	0.0	0.0	90.0	62.95	30.02	0.00	90	0.80	C
			B-7	X	70.45	30.02	3.35	0.0	0.0	90.0	70.45	30.02	0.00	90	0.80	C
			B-8	X	77.95	30.02	3.35	0.0	0.0	90.0	77.95	30.02	0.00	90	0.80	C
			B-9	X	85.45	30.02	3.35	0.0	0.0	90.0	85.45	30.02	0.00	90	0.80	C
			B-10	X	92.95	30.02	3.35	0.0	0.0	90.0	92.95	30.02	0.00	90	0.80	C
			B-11	X	100.45	30.02	3.35	0.0	0.0	90.0	100.45	30.02	0.00	90	0.80	C
			B-12	X	107.95	30.02	3.35	0.0	0.0	90.0	107.95	30.02	0.00	90	0.80	C
			B-13	X	55.45	28.02	3.35	0.0	0.0	90.0	55.45	28.02	0.00	90	0.80	C
			B-14	X	62.95	28.02	3.35	0.0	0.0	90.0	62.95	28.02	0.00	90	0.80	C
			B-15	X	70.45	28.02	3.35	0.0	0.0	90.0	70.45	28.02	0.00	90	0.80	C
			B-16	X	77.95	28.02	3.35	0.0	0.0	90.0	77.95	28.02	0.00	90	0.80	C
			B-17	X	85.45	28.02	3.35	0.0	0.0	90.0	85.45	28.02	0.00	90	0.80	C
			B-18	X	92.95	28.02	3.35	0.0	0.0	90.0	92.95	28.02	0.00	90	0.80	C
			B-19	X	100.45	28.02	3.35	0.0	0.0	90.0	100.45	28.02	0.00	90	0.80	C
			B-20	X	107.95	28.02	3.35	0.0	0.0	90.0	107.95	28.02	0.00	90	0.80	C
			B-25	X	85.45	26.02	3.35	0.0	0.0	90.0	85.45	26.02	0.00	90	0.80	C
			B-26	X	92.95	26.02	3.35	0.0	0.0	90.0	92.95	26.02	0.00	90	0.80	C
			B-27	X	100.45	26.02	3.35	0.0	0.0	90.0	100.45	26.02	0.00	90	0.80	C
			B-28	X	107.95	26.02	3.35	0.0	0.0	90.0	107.95	26.02	0.00	90	0.80	C
			B-34	X	92.95	24.02	3.35	0.0	0.0	90.0	92.95	24.02	0.00	90	0.80	C
			B-35	X	100.45	24.02	3.35	0.0	0.0	90.0	100.45	24.02	0.00	90	0.80	C
			B-36	X	107.95	24.02	3.35	0.0	0.0	90.0	107.95	24.02	0.00	90	0.80	C



### 4.1 Valori di Illuminamento su:Pavimento

O (x:28.31 y:41.14 z:0.00)	Risultati	Medio	Minimo	Massimo	Min/Medio	Min/Max	Medio/Max
DX:1.03 DY:3.46	Illuminamento Orizzontale (E)	574 lux	182 lux	1213 lux	0.32	0.15	0.47

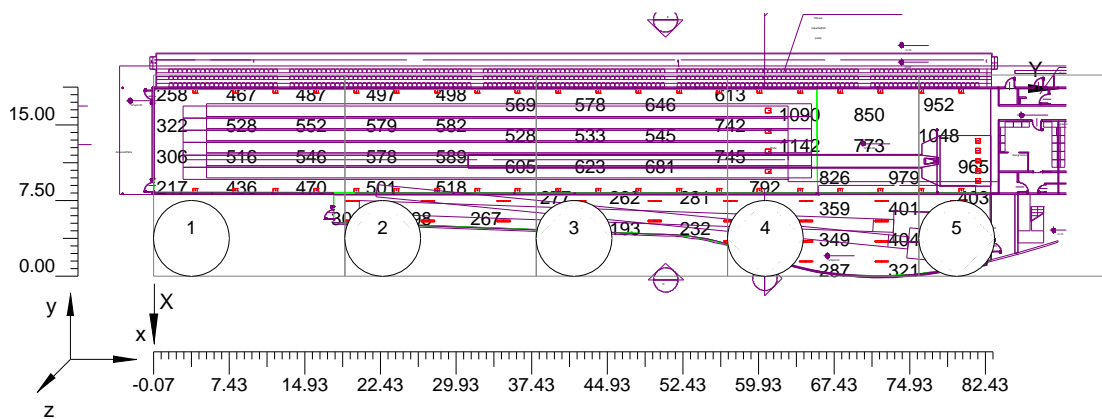
Tipo Calcolo

Dir.+Indir.(3 Interriflessioni)

4.1  
Scala 1/750

### Valori di Illuminamento su:Pavimento

Totale Parti: 5

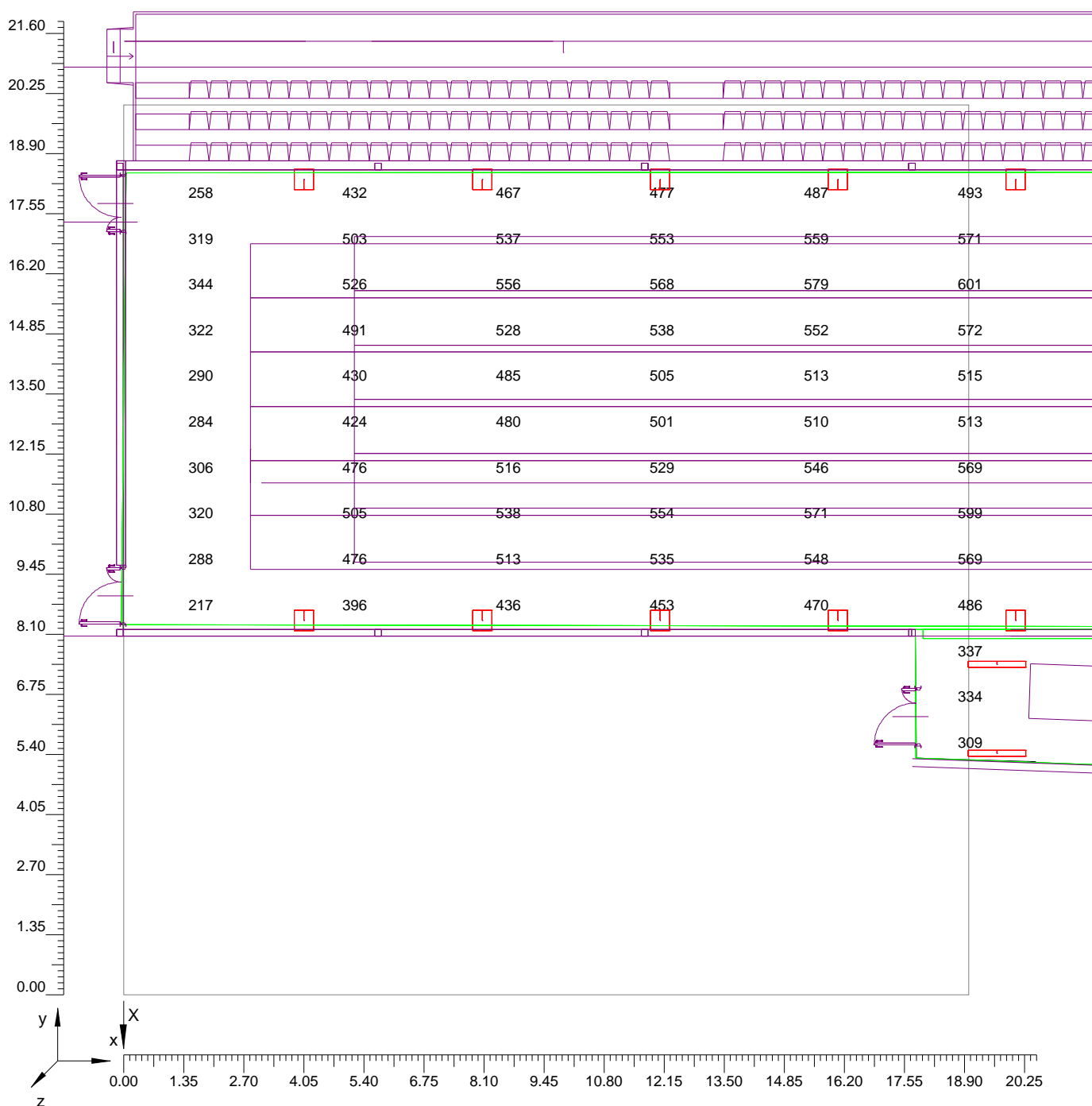




### 4.1 Valori di Illuminamento su:Pavimento

Scala 1/135

Parte 1 di 5

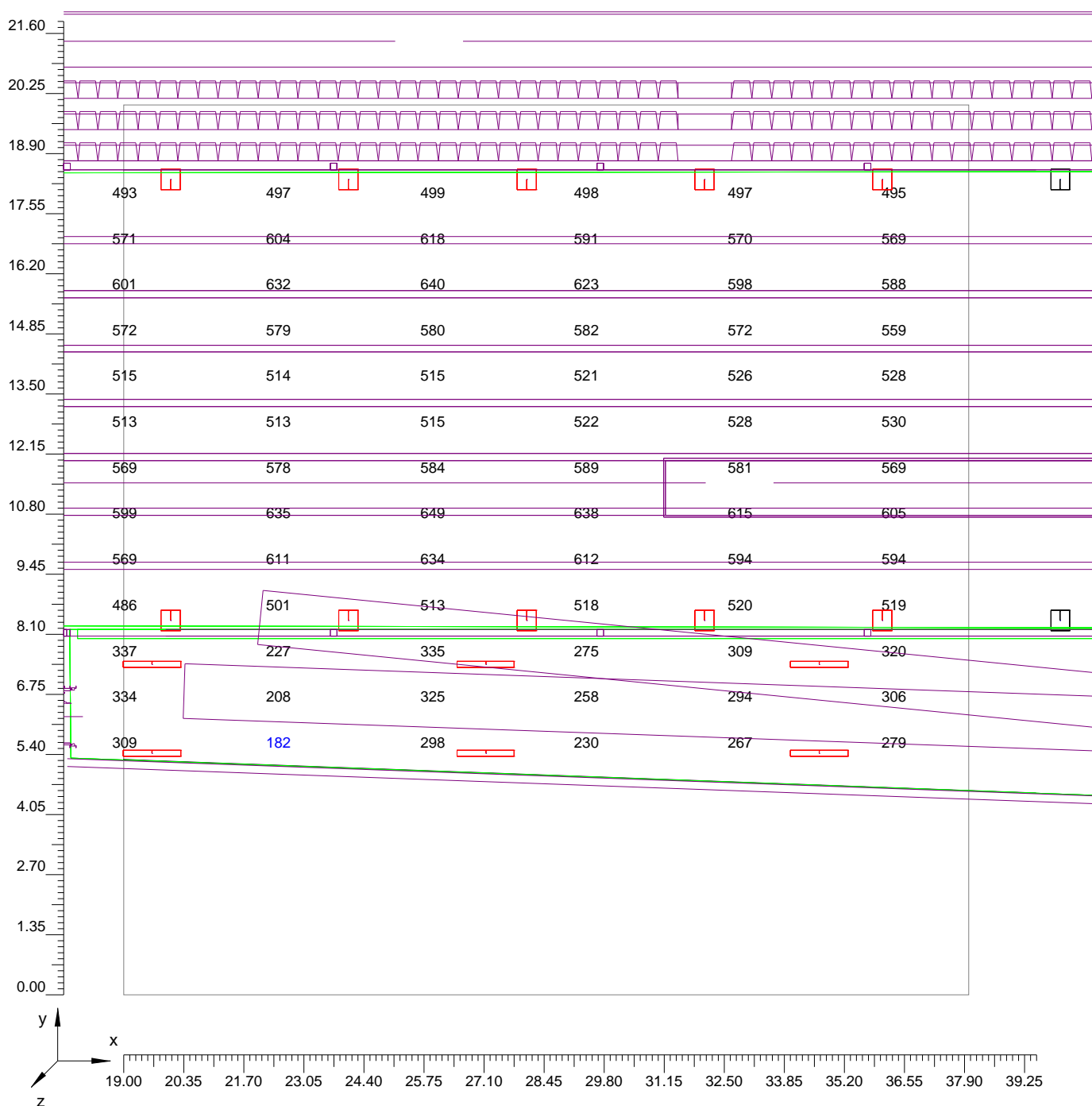




### 4.1 Valori di Illuminamento su:Pavimento

Scala 1/135

Parte 2 di 5

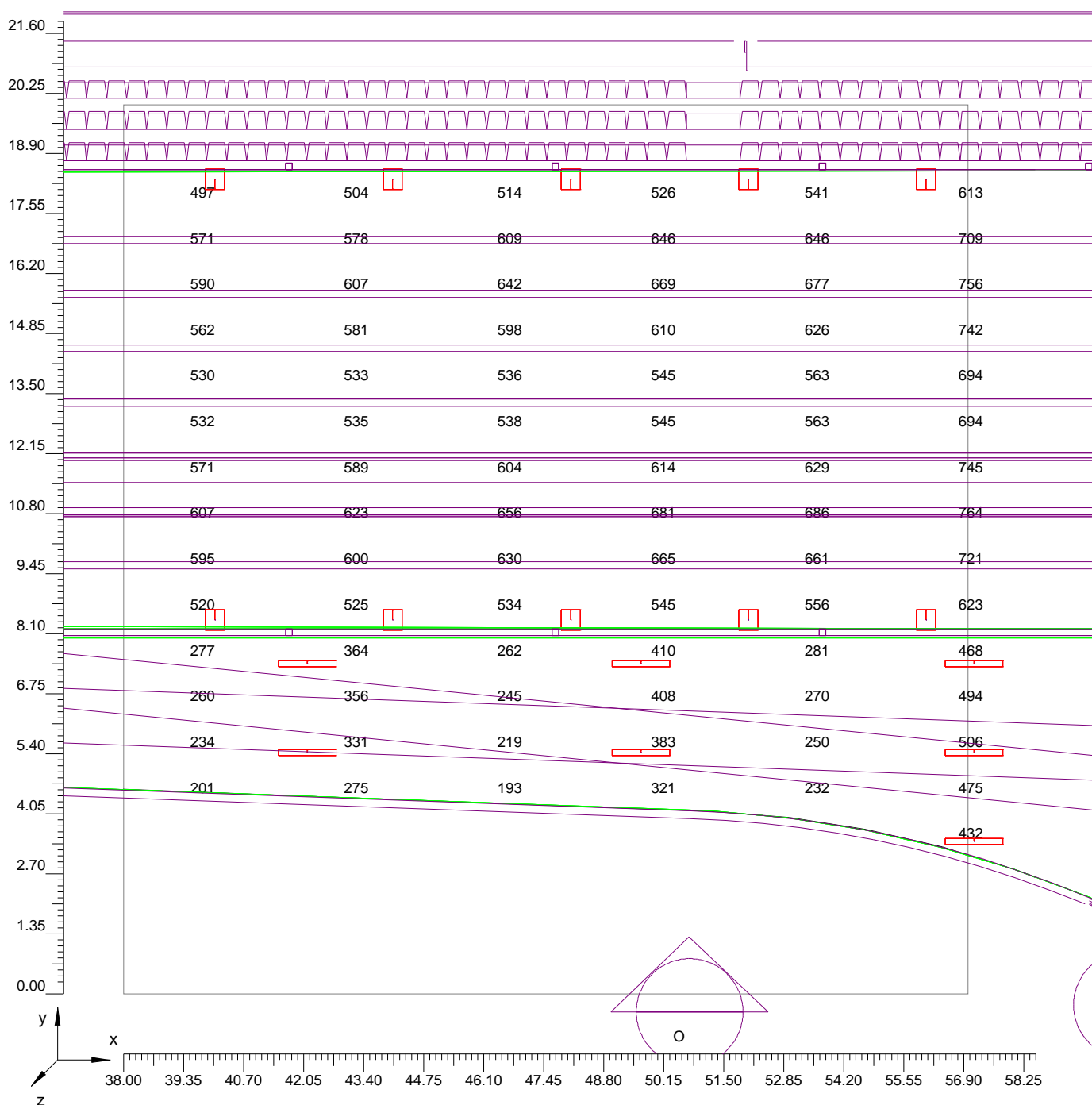




### 4.1 Valori di Illuminamento su:Pavimento

Scala 1/135

Parte 3 di 5

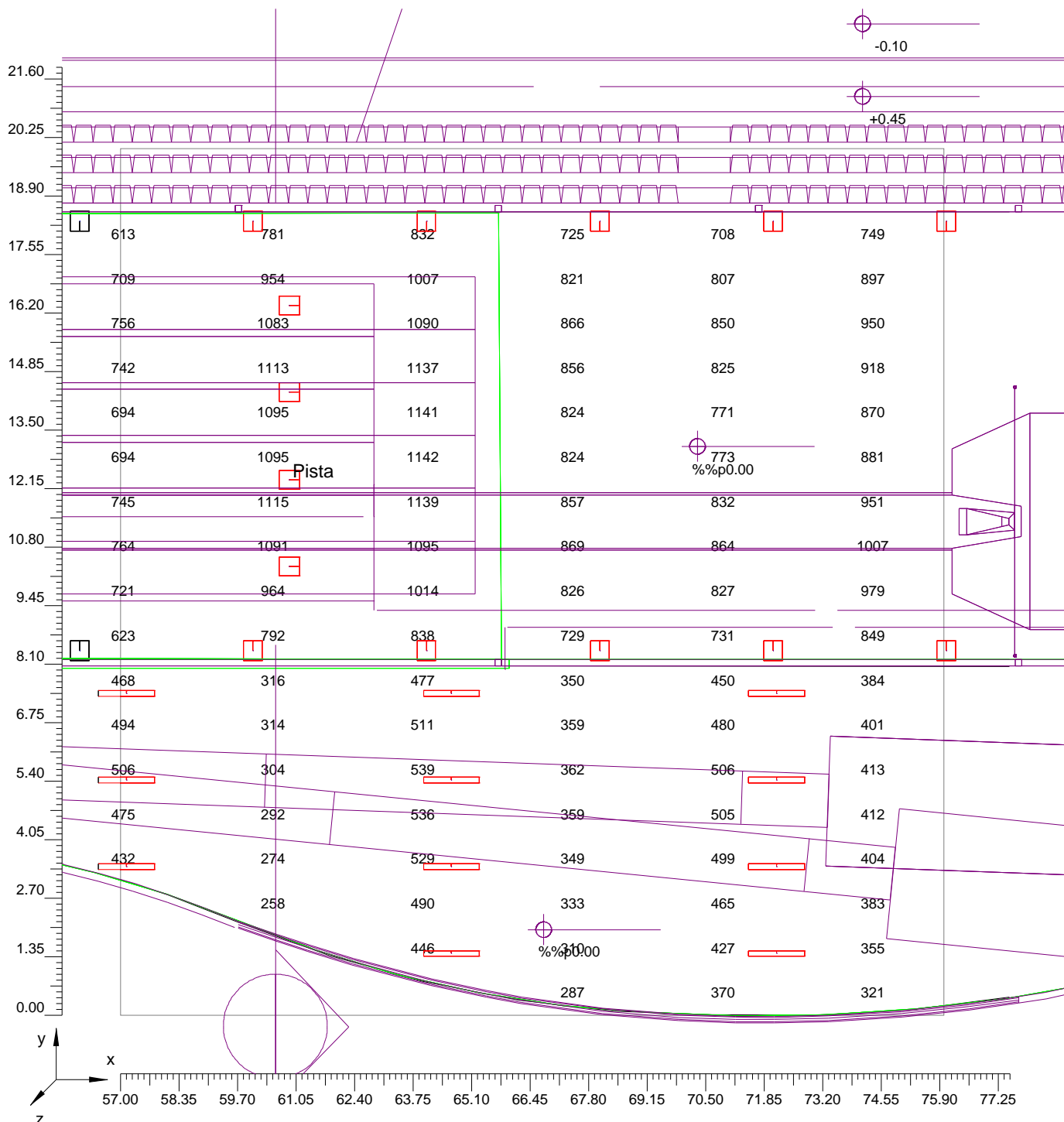




### 4.1 Valori di Illuminamento su:Pavimento

Scala 1/135

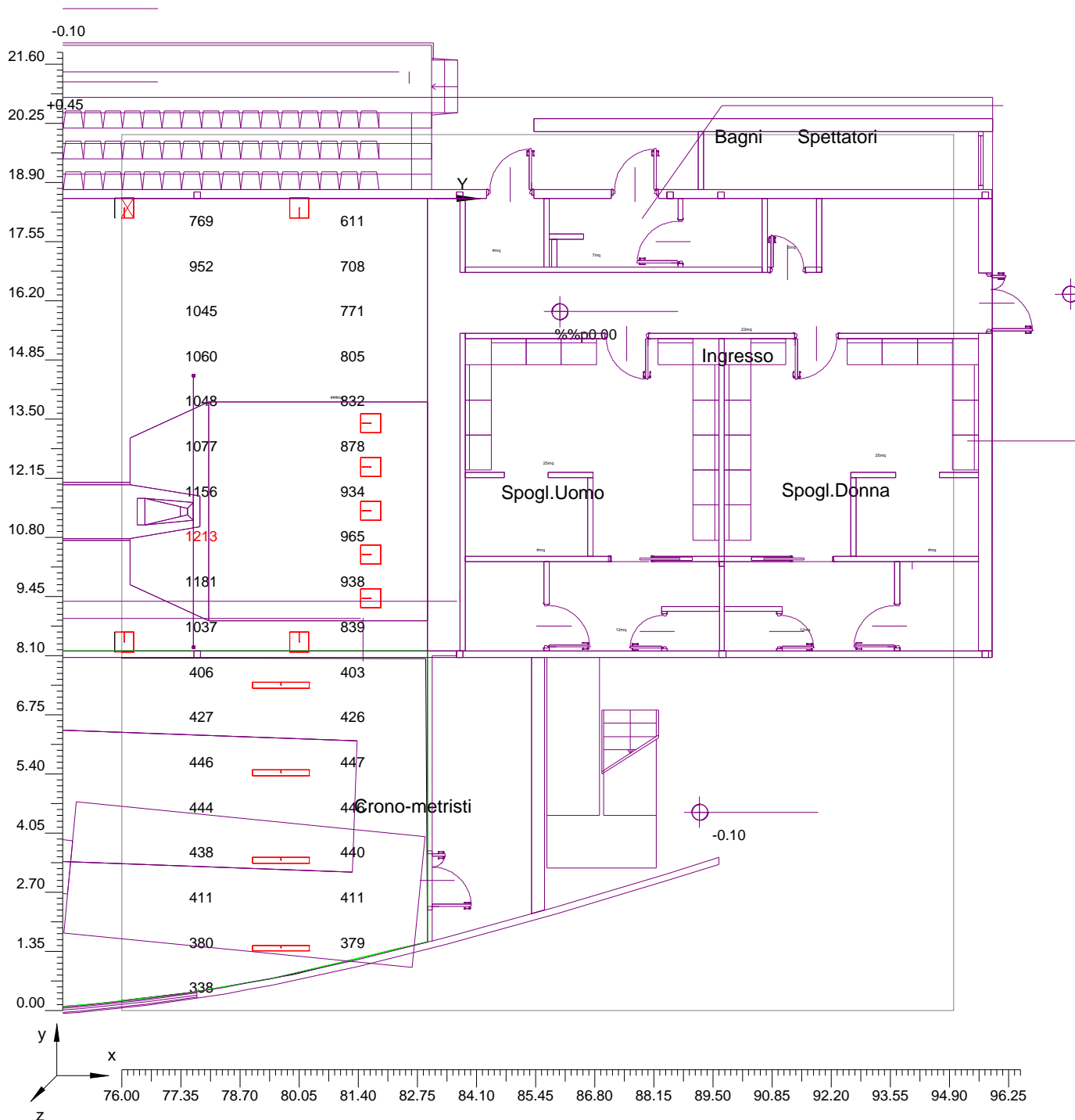
Parte 4 di 5



### 4.1 Valori di Illuminamento su:Pavimento

Scala 1/135

Parte 5 di 5







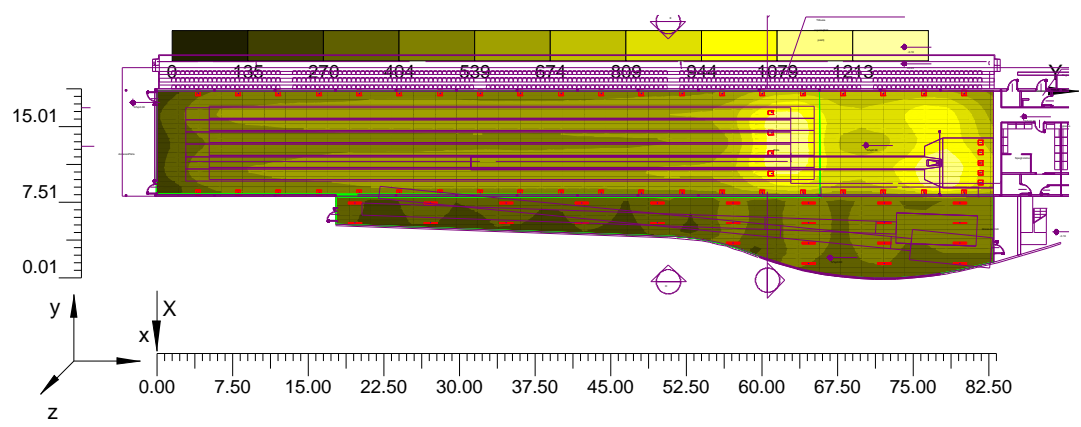
### 4.2 Diagramma a Spot degli Illuminamenti su:Pavimento\_1

O (x:28.31 y:41.14 z:0.00)	Risultati	Medio	Minimo	Massimo	Min/Medio	Min/Max	Medio/Max
DX:1.03 DY:3.46	Illuminamento Orizzontale (E)	574 lux	182 lux	1213 lux	0.32	0.15	0.47

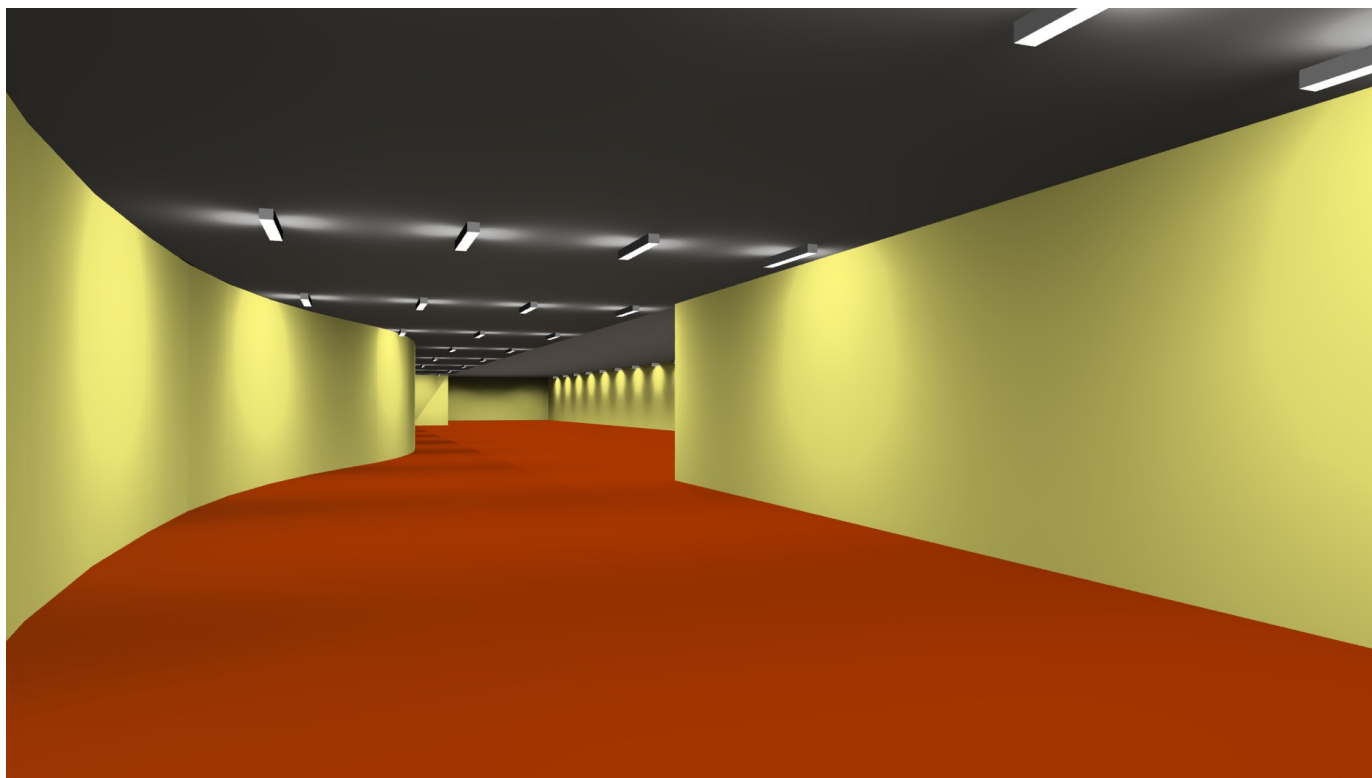
Tipo Calcolo

Dir.+Indir.(3 Interriflessioni)

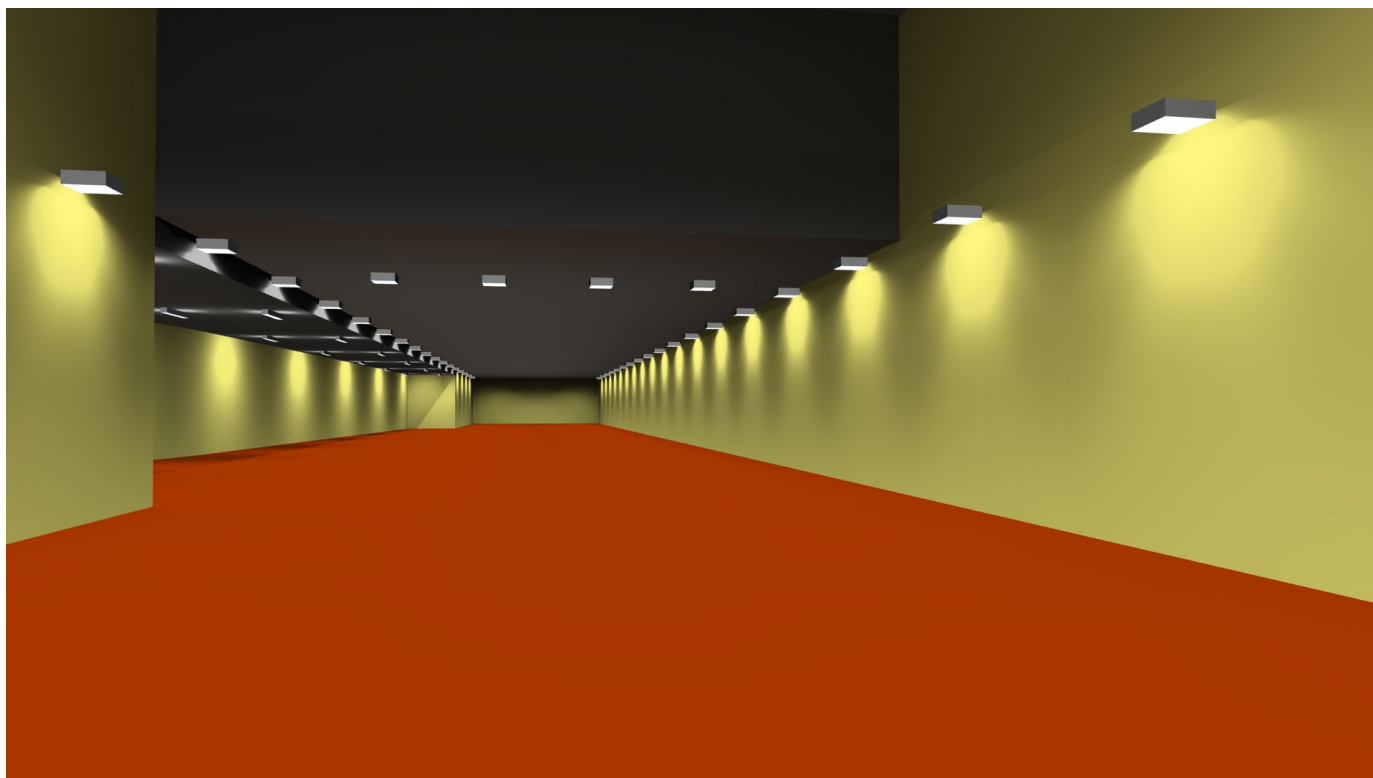
Scala 1/750



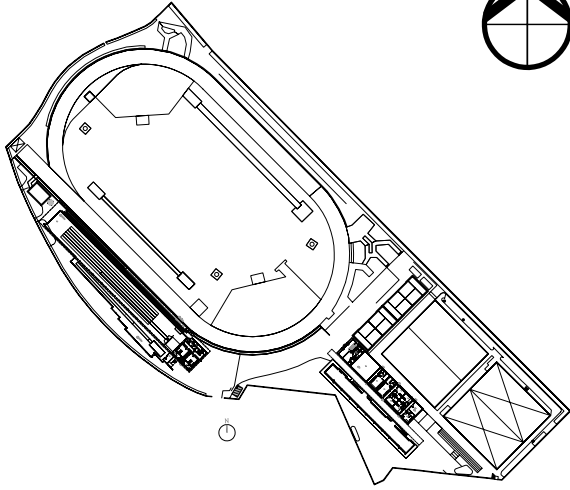
5.1 Immagine: Render\_001



## 5.2 Immagine: Render\_002



<b>Informazioni Generali</b>	<b>1</b>
<b>1. Dati Riepilogativi Progetto</b>	
1.1 Informazioni sul Locale	2
1.2 Calcolo Energetico	2
<b>2. Viste Progetto</b>	
2.1 Vista 2D in Pianta	3
2.2 Vista Laterale	4
2.3 Vista Frontale	5
<b>3. Dati Riepilogativi Apparecchi</b>	
3.1 Informazioni Apparecchi/Rilievi	6
3.2 Informazioni Lampade	6
3.3 Tabella Riepilogativa Apparecchi	6
3.4 Tabella Riepilogativa Puntamenti	7
<b>4. Tabella Risultati</b>	
4.1 Valori di Illuminamento su:Pavimento	9
4.2 Diagramma a Spot degli Illuminamenti su:Pavimento_1	15
<b>5. Immagini</b>	
5.1 Immagine: Render_001	16
5.2 Immagine: Render_002	17



TITOLO

DIMENSIONAMENTO  
LINEE ELETTRICHE

---



Caratteristiche di posa

Sigla    Tipo

**Unipolare in PVC o EPR**

- 1    in tubo incassato
- 2    in tubo in aria
- 3    in aria libera in posizione non accessibile
- 4    in aria libera a trifoglio
- 5    in aria libera in piano a contatto
- 6    in aria libera distanziati in orizzontale
- 7    in aria libera distanziati in verticale

**Multipolari in PVC o EPR**

- 1    in tubo incassato
- 2    in tubo in aria
- 3    in aria libera distanziato da parete o soffitto, o su passerella
- 4    in aria libera fissato a parete o soffitto

**Unipolari PYRO**

- 1    in aria libera a trifoglio
- 2    in aria libera in piano a contatto
- 3    in aria libera distanziati in orizzontale
- 4    in aria libera distanziati in verticale
- 5    in aria libera fissati a parete o soffitto
- 6    a trifoglio in aria fissati a parete o soffitto

**Multipolari Pyro**

- 1    in aria libera distanziato da parete o soffitto, o su passerella
- 2    in aria libera fissato a parete o soffitto

## Alimentazioni

Collegamento ai vari circuiti		Alimentaz.	Alimentaz.
		QE PISTA	QE SPOGLIATOIO
Denominazione circuito			
Numero elenco	n	1	1
Potenza	kVA	45	20
Numero fasi	n	3	3
Tensione di riferimento	V	400	400
Fattore di potenza	cos $\phi$	0,8	0,8
Corrente	A	81,19	36,08
Tipo isolante (pvc=A - epro=B - pyroL nudo=C - pyroL rivestito=D - pyroH nudo=E - pyroH rivestito=F)	A ... F	b	b
N.° conduttori caricati (2 o 3)	2/3	3	3
Tipo cavo (Unipolare/Multipolare = U/M)	U/M	m	m
Tipo posa (se U: 1/2/3/4/5/6/7; se M: 1/2/3/4; se pyro U: 1/2/3/4/5/6; se pyro M: 1/2)	1..7 o 1..4 o 1..6 o 1.2	1	1
Temperatura di esercizio	°C	30	30
Coefficiente riduzione temperatura	numero	1	1
Cavi annegati, a fascio (da 0 a 20)	0 ... 20	03	03
Cavi su singolo strato a pavimento o parete	0 ... 9	0	0
Cavi su singolo strato a soffitto	0 ... 9	0	0
Passerelle orizzontali sostegno cavi	0 ... 3	0	0
Passerelle verticali sostegno cavi	0 ... 2	0	0
Scala posa cavi o staffa	0 ... 3	0	0
Cavi ( o circuiti) su passerella o staffa	0 . 9 / 0..3	0	0
Sigla tipo cavo	sigla	b3m1	b3m1
Lunghezza	m	50	115
Sezione cavo	mmq	50	35
Numero cavi per fase	n	1	1
Portata	A	130	109
Coefficiente riduzione di portata	numero	0,7	0,7
Portata effettiva	A	91	76,3
Verifica portata	verifica	corretto	corretto
Sezione neutro	mmq	25	25
Numero cavi per neutro	n	1	1
Sezione PE	mmq	25	25
Numero cavi PE	n	1	1
Caduta di tensione del tratto	V	2,55	3,59
Caduta di tensione % del tratto	%	0,64	0,90
Caduta di tensione % totale	%	0,64	0,90
C.d.t. massima ammessa = 4%	verifica	corretto	corretto
Icc trifase	kA	6,44	2,92
Icc fra due fasi	kA	5,58	2,53
Icc fase neutro	kA	3,15	1,36
Corente globale di guasto	kA	3,15	1,36
Fattore di potenza al c.c.	cos $\phi$	0,82	0,94
Tipo interruttore (modulare/scatolato)	sigla	scatolato	scatolato
potere d'interruzione	kA	15	15
interruttore al corto circuito	veifica	corretto	corretto
taratura interruttore	A	100	63
I magnetica (scatolato)	A	-	-
Curva (modulare)	tipo	C	C
protezione al sovraccarico	verifica	corretto	corretto
tempo intervento per Icc max	sec	0,0200	0,0200
tempo intervento per Icc min	sec	0,0200	0,0200
energia passante ammessa	A2sec	53290000	26112100
energia passante effettiva max.	A2sec	830743	171108
protezione linea al c.to c.to	verifica	corretto	corretto
energia passante effettiva min.	A2sec	198540	37045
protezione linea al c.to c.to	verifica	corretto	corretto