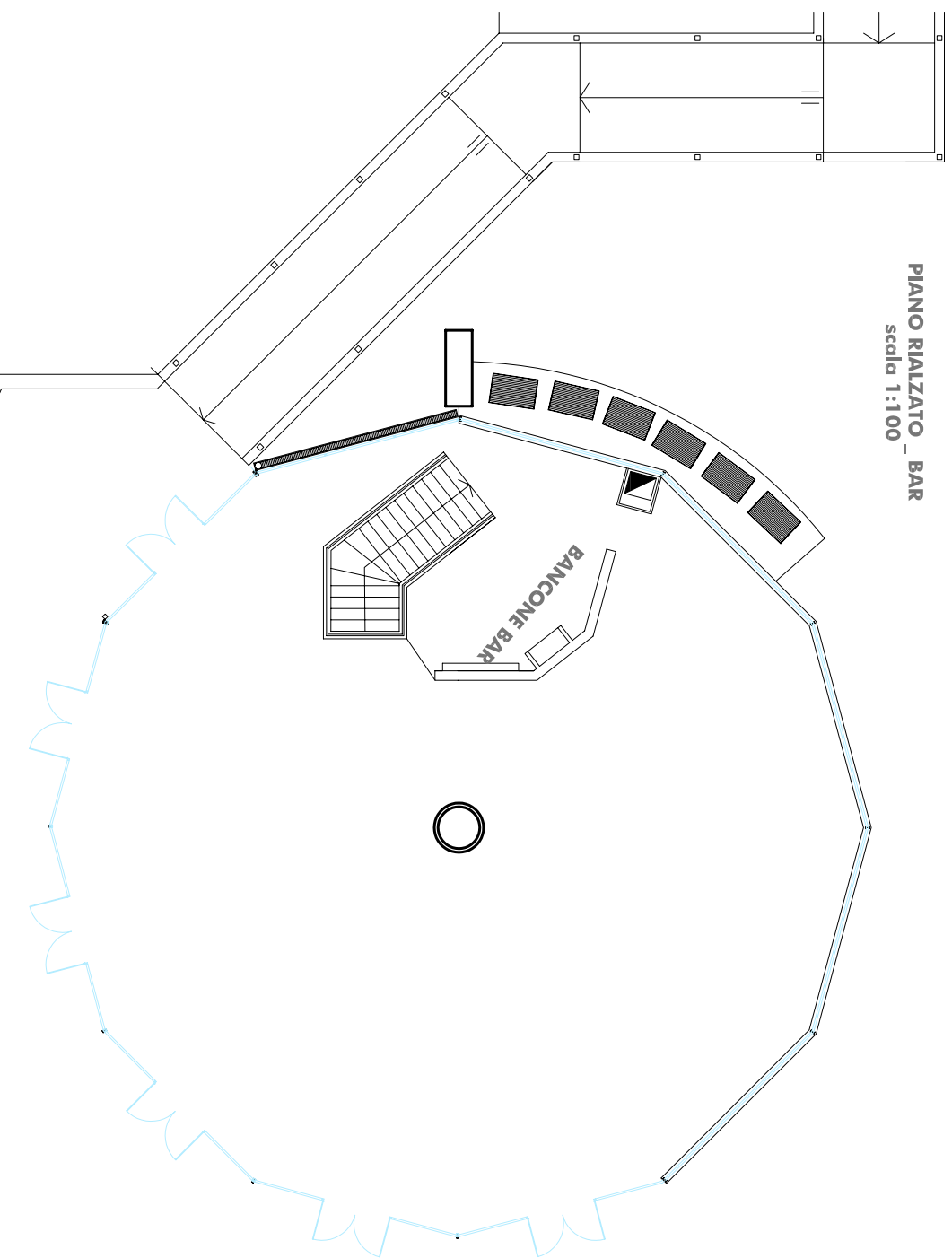
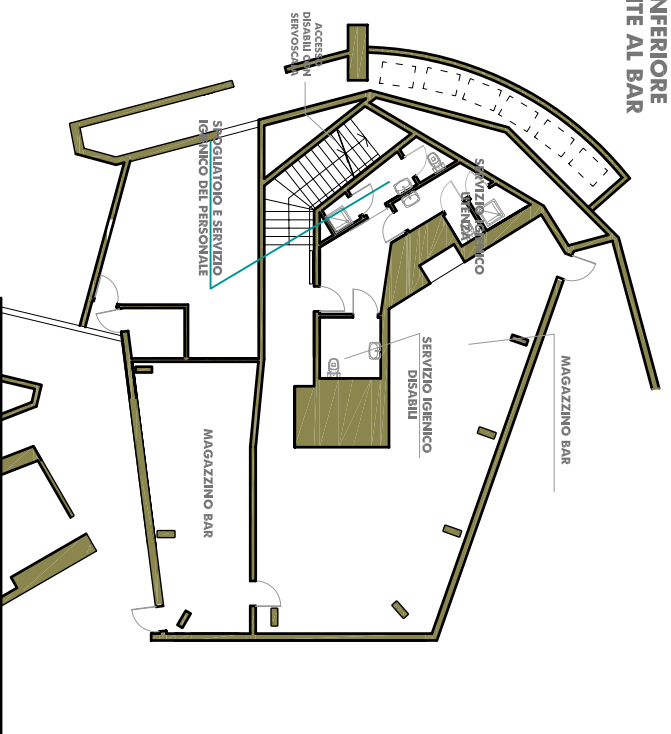


CENTRO BALNEARE SCARIONI

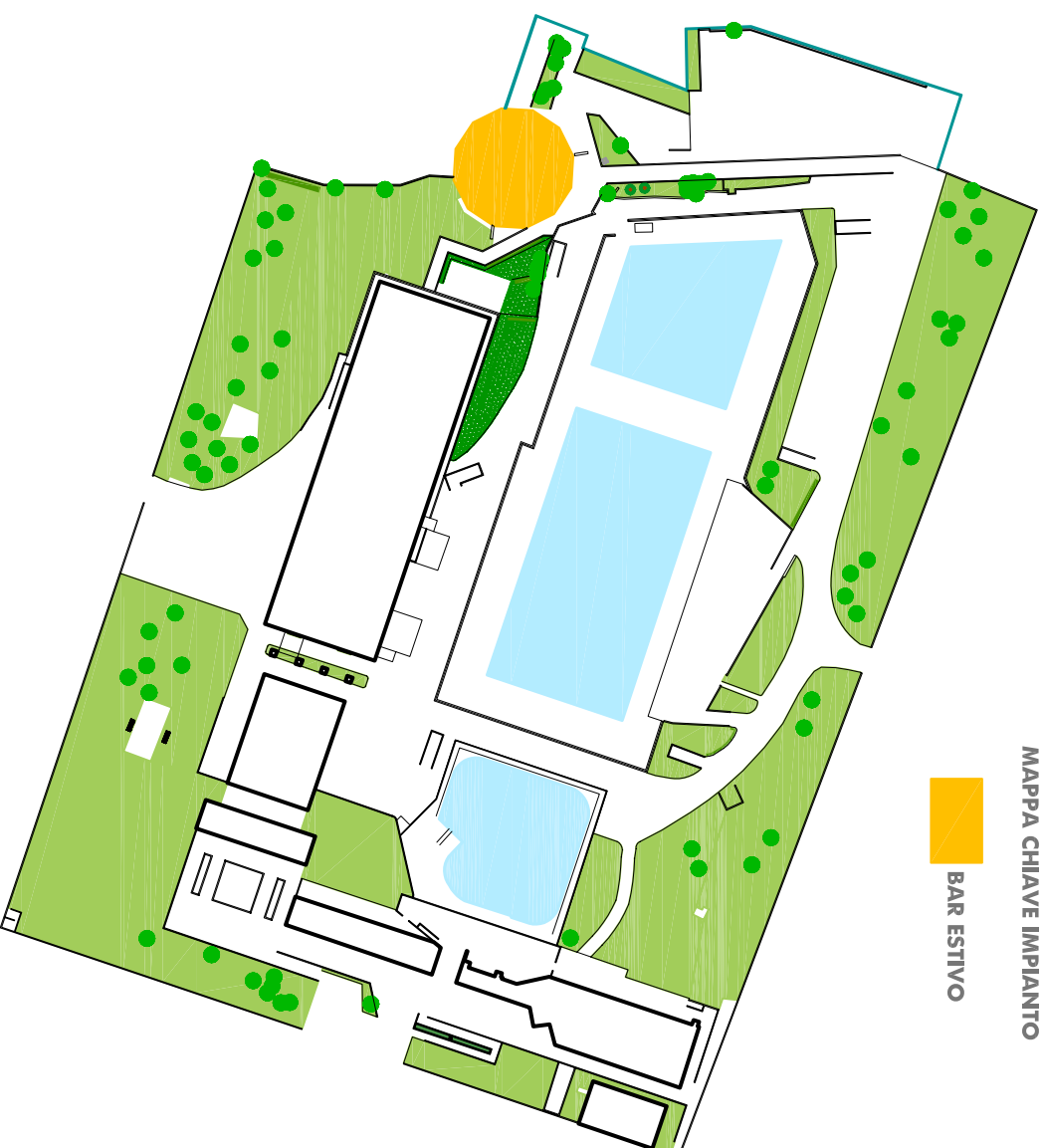
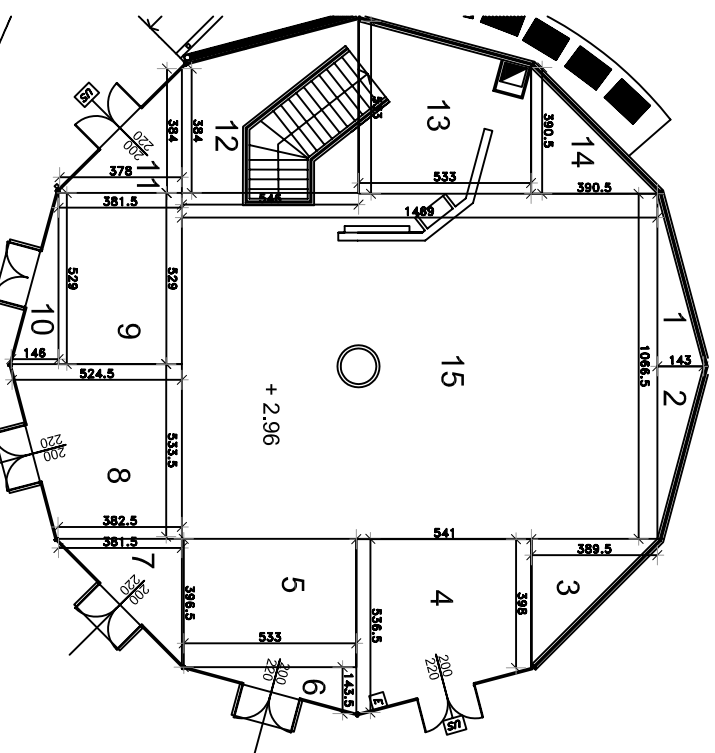
PIANO RIALZATO _ BAR
scala 1:100



PIANO INFERIORE
PERTINENTE AL BAR



PIANTA PER CALCOLO R.A.I



MAPPA CHIAVE IMPIANTO

BAR ESTIVO

BAR ESTIVO e LOCALI DI PERTINENZA
H. Interna di locali BAR cm.300
H. Interna di locali piano inferiore cm.270

MILANOSPORT - DIVISIONE TECNICA
Via Turbigo 33
20124 Milano
Tel. 02.623451
Fax. 02.62345191

CENTRO BALNEARE SCARIONI - v. Volturno

TABELLA CALCOLO RAPPORTI AEROILLUMINANTI

| Calcolo area bar estivo | Calcolo superficie finestre: | Calcolo R.A.I |
|-------------------------------------|------------------------------------|------------------------------------|
| 1/2_ (10,66 x 1,43)/2=MQ 15,24 | (5,39 x (2,20-0,6)) x 7 = 60,37 MQ | (5,39 x (2,20-0,6)) x 7 = 60,37 MQ |
| 3_ (3,89 x 3,98)=MQ 15,48 | | |
| 4_ (5,36+3,98)x 5,41/2=MQ 25,26 | | |
| 5_ (3,96 x 5,33)=MQ 21,11 | | |
| 6_ (1,43 x 5,33)/2=MQ 3,81 | | |
| 7_ (3,81 x 3,96)/2=MQ 7,54 | | |
| 8_ (5,24+3,82)x 5,33/2=MQ 24,14 | | |
| 9_ (5,29 x 3,81)=MQ 20,15 | | |
| 10_ (5,29 x 3,81)/2=MQ 10,07 | | |
| 11_ (3,78 x 3,84)/2=MQ 7,25 | | |
| 12_ (5,53 + 3,84) x 5,46/2=MQ 24,97 | | |
| 13_ (5,53 + 3,90) x 5,33/2=MQ 25,13 | | |
| 14_ (3,9 x 3,9)/2=MQ 7,60 | | |
| 15_ (14,69 x 10,66)=MQ 156,59 | | |

$\frac{342,88}{10} = 34,28 \text{ MQ} < 60,37 \text{ MQ}$
il valore rispetta la normativa vigente

Sommario MQ. 364,38 - 21,5 (ingombro scala, pilastro e bancone)=MQ complessivi 342,88