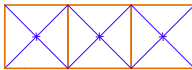




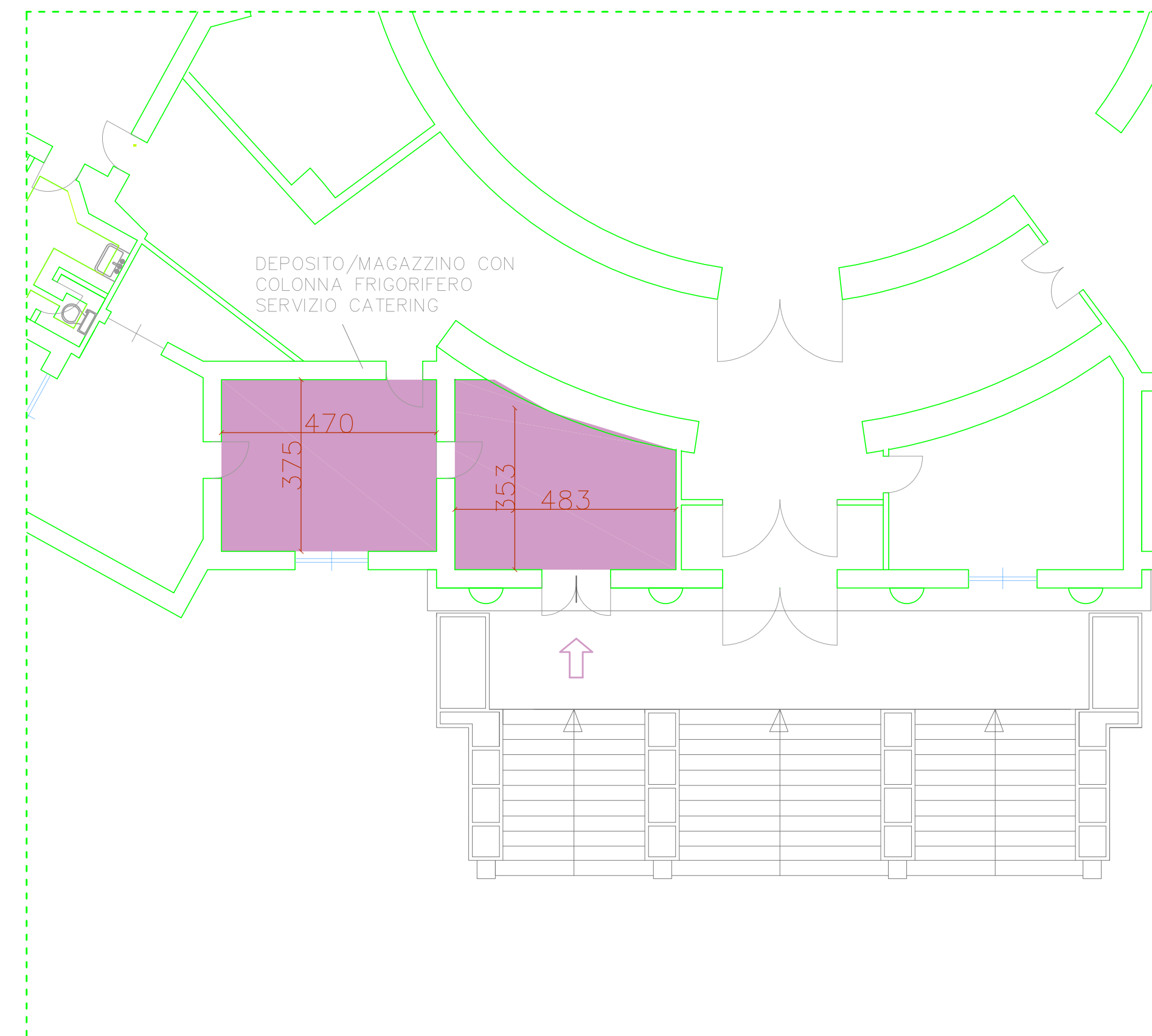
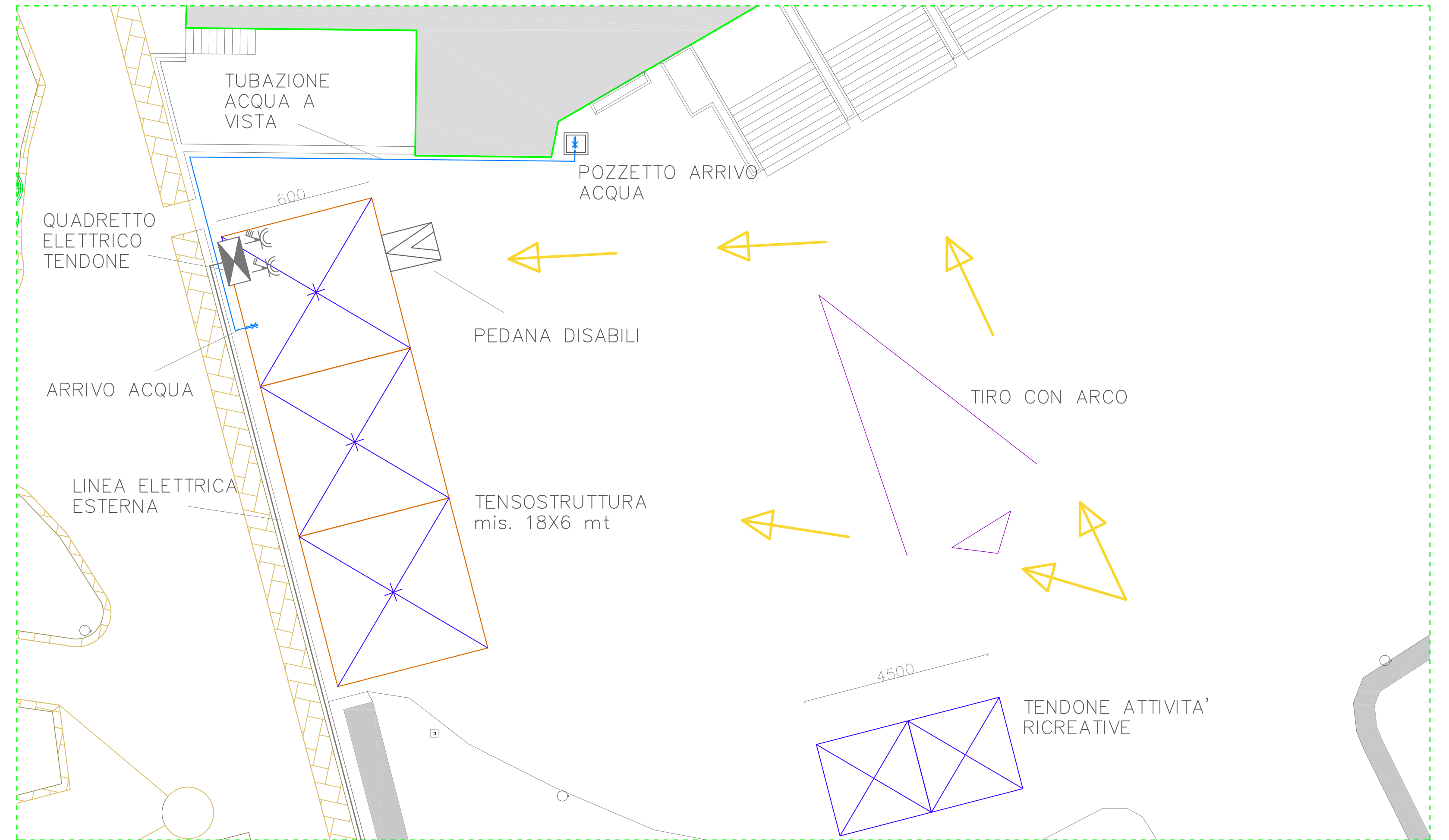


-  TENSOSTRUTTURA SERVIZI DI RISTORAZIONE mis. 18x6 mt
-  DIREZIONE PERCORSI
-  DEPOSITO/MAGAZZINO CON COLONNA FRIGORIFERO RISERVATO AL SERVIZIO CATERING
-  SPOGLIATOIO CON ARMADIETTI E SERVIZI IGIENICI RISERVATO AL SERVIZIO CATERING
-  PRESA INTERBLOCCATA TRIFASE E MONOFASE



centro sportivo LIDO
p.le Lotto, 15 – Milano

CREAZIONE
ZONA MENSA
CAMPUS 2019

UFFICIO TECNICO MILANOSPORT
v. Tunisia, 35
20124 Milano
tel. 02.62.34.51.60
fax. 02.62.34.51.95
ufficiotecnico@milanosport.it



PROPRIETARIO
COMUNE DI MILANO

GESTORE
MILANOSPORT S.p.a.

PROGETTISTA

progetto
PLANIMETRIA

DATA
30 MARZO 2019
SCALA
1:100
DISEGNATORE
A.M. D.A.

TAVOLA
1